

Innovation

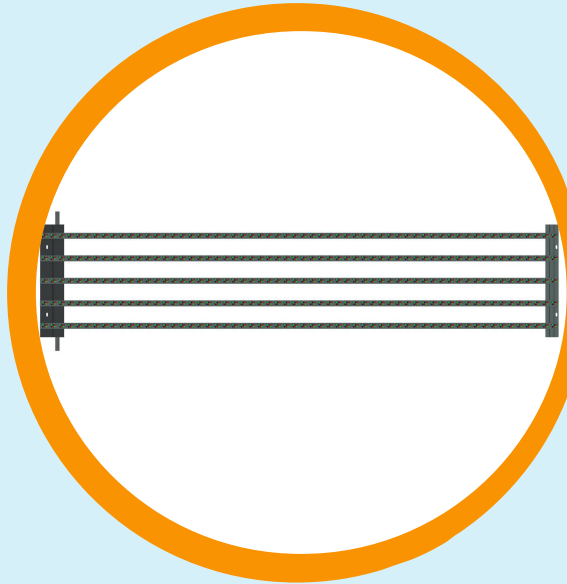
Cooperation



ELECTRONIC CATALOG

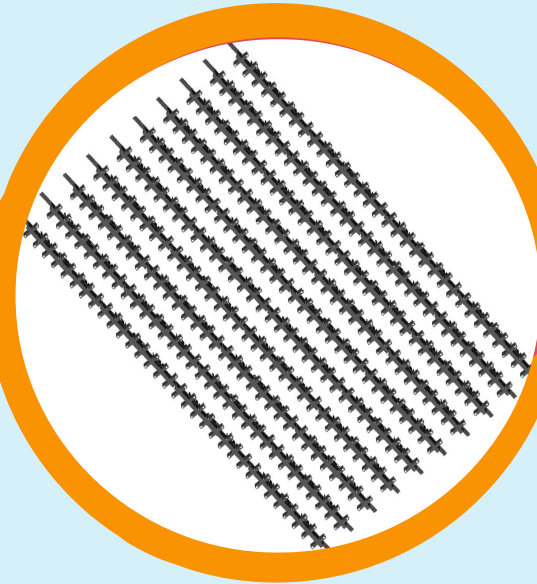


Main LED Products



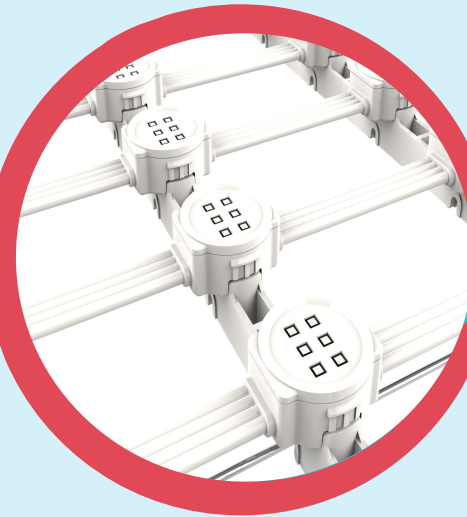
LED Media Facade

Suitable Day & Night time viewing
 Strong anti-wind ability,
 Available adjust angles to -30 degrees.



LED Curtain Mesh

Very flexible, Suitable for any special project.
 Light weight & Up to 85% Transparent rate.
 Meet day & night time viewing.



LED Mesh

Data double backup function.
 Current are adjustable.
 30m long distance power and data connection.



LED Video Strip

Small volume design, easy to hiding under the structure.
 Suitable for building which don't allow to see products.



LED Media Facade



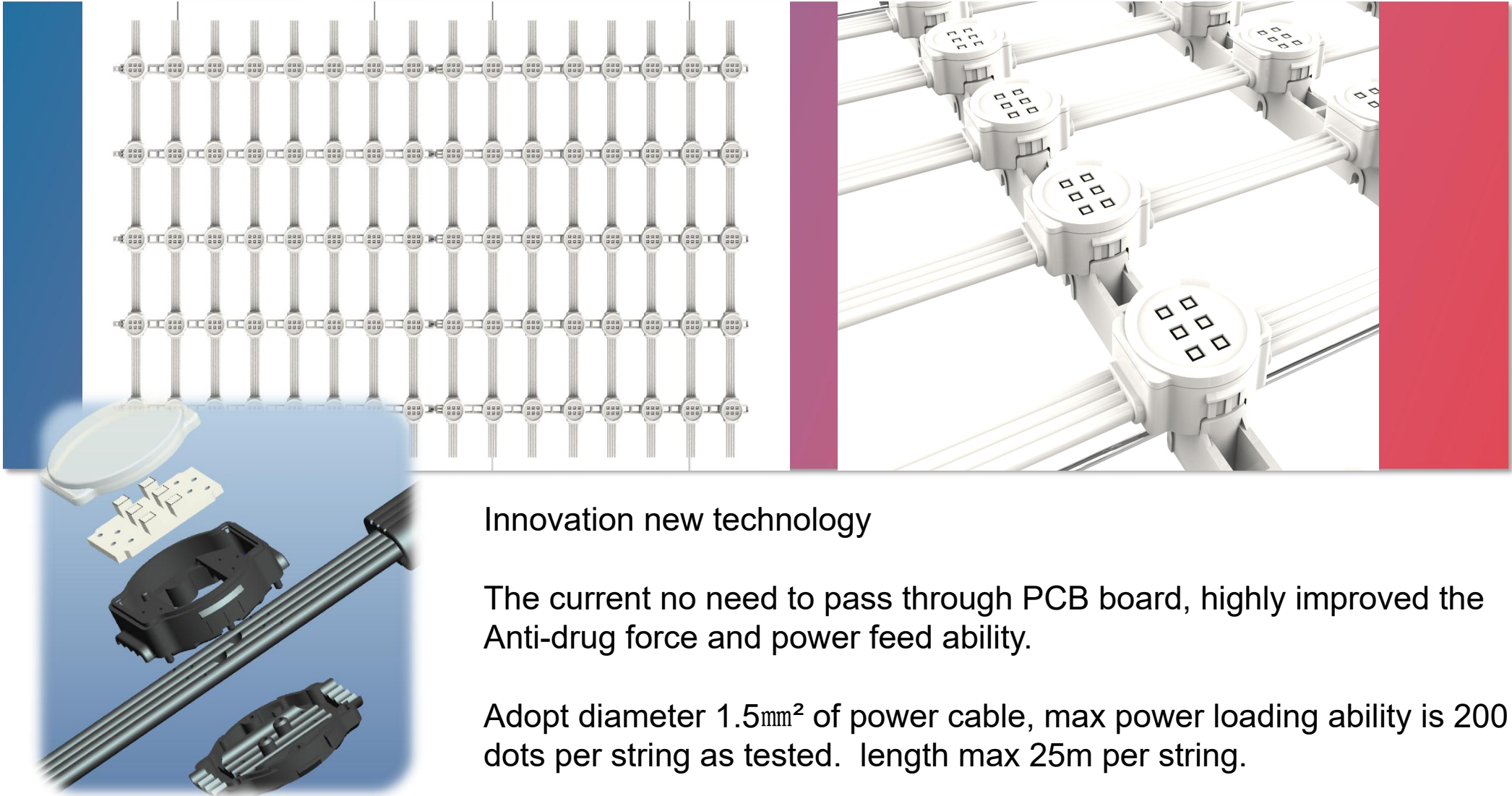
LED Lamp with mirror arrangement — There is no color difference or color bias from any view angle.

Single strip flexible connection-----Adjustable up & down strips view angle, single strip is removable for maintainance.

LED Media Facade and Control system are separation design-----Each panel is more light weight and high transparency rate.



LED Mesh



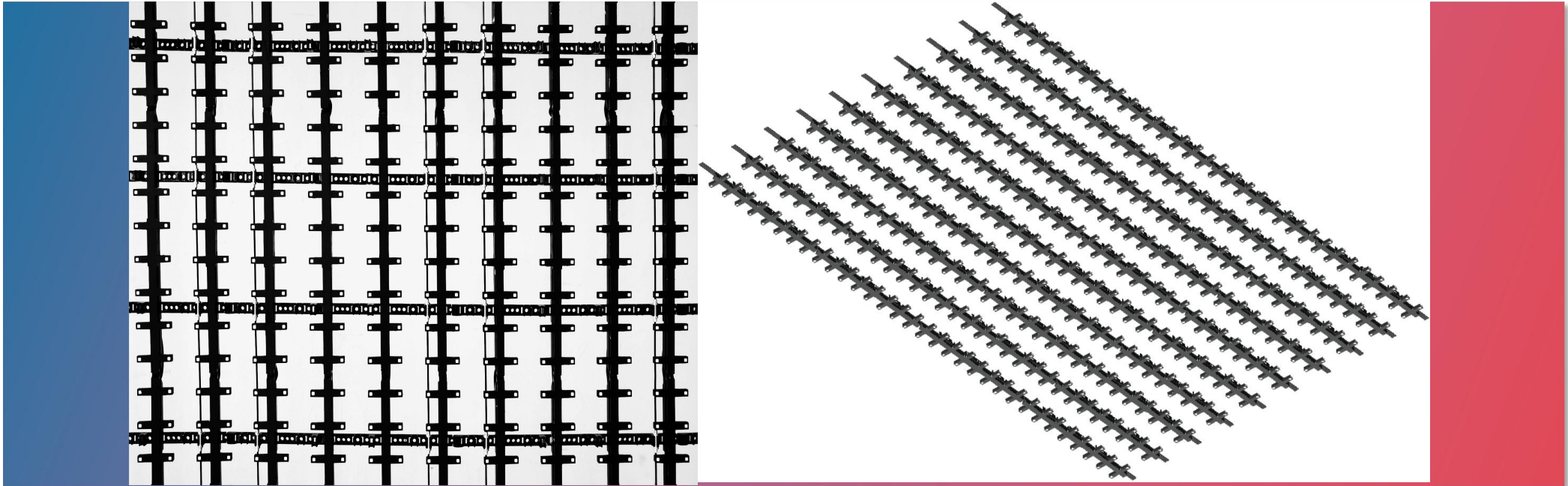
Innovation new technology

The current no need to pass through PCB board, highly improved the Anti-drag force and power feed ability.

Adopt diameter 1.5mm^2 of power cable, max power loading ability is 200 dots per string as tested. length max 25m per string.



LED Curtain Mesh

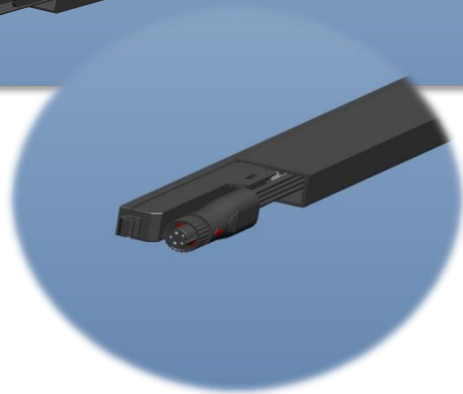
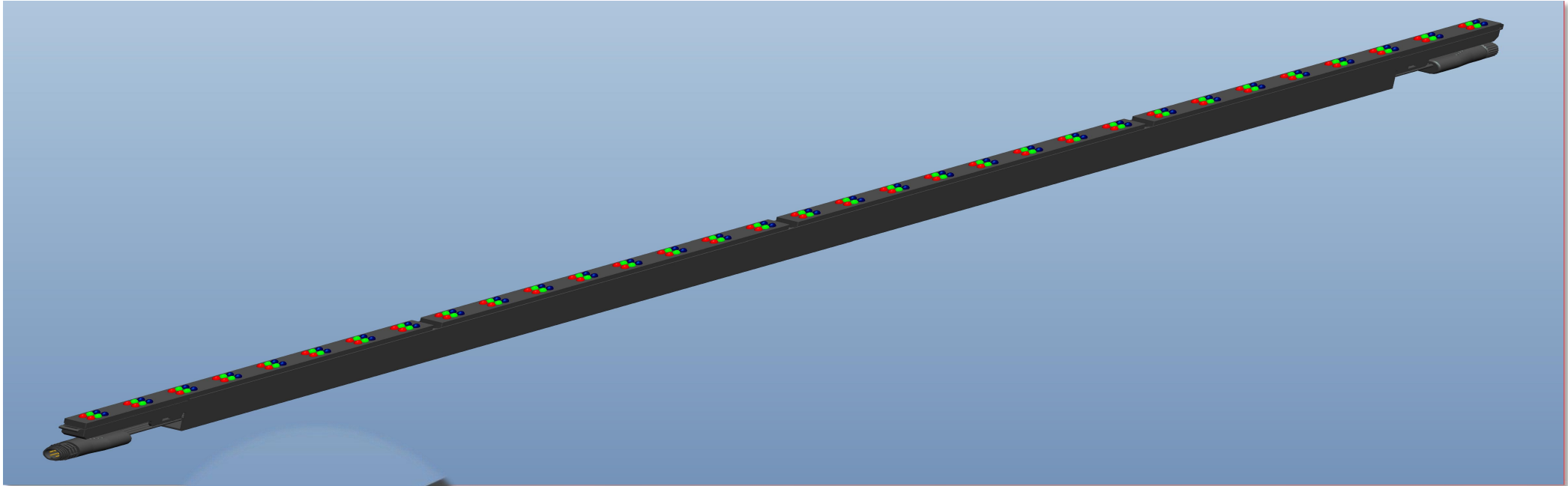


LED Curtain Mesh and Control system are separation design-----Light weight 3.2kg/m^2 .

Built-in DC Driver design ——DC7.5V ~ 36V wide voltage input, There is no any frame or structure in the middle of curtain mesh.

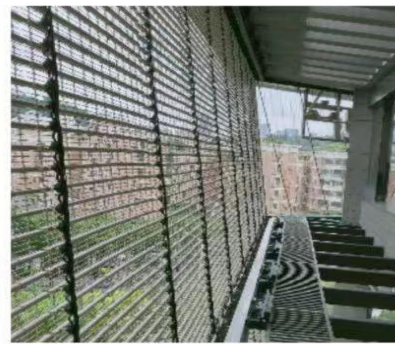


LED Video Strip



12.5MM width——Easy to hiding in the structure

48V power feeding—— Max connecton 100m long distance.



LED Media Mesh

LED Module: G52-60

Brightness: 6000CD

Area: 160sqm

Special design with mesh, The led media mesh and structure is invisual when switch screen.

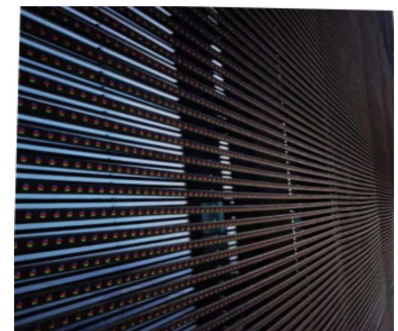
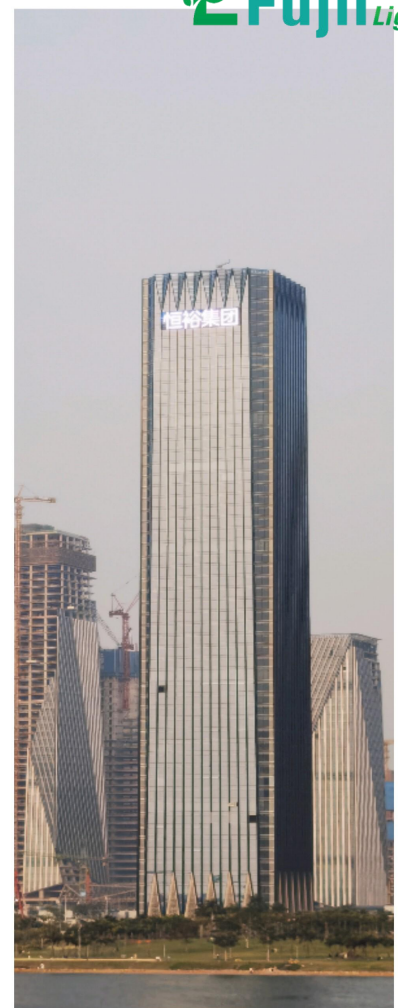


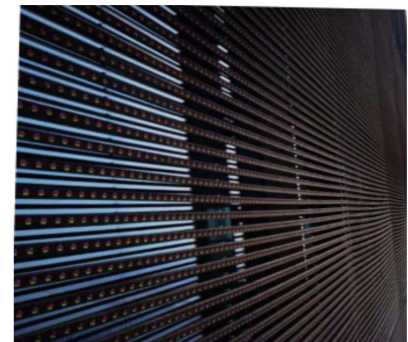
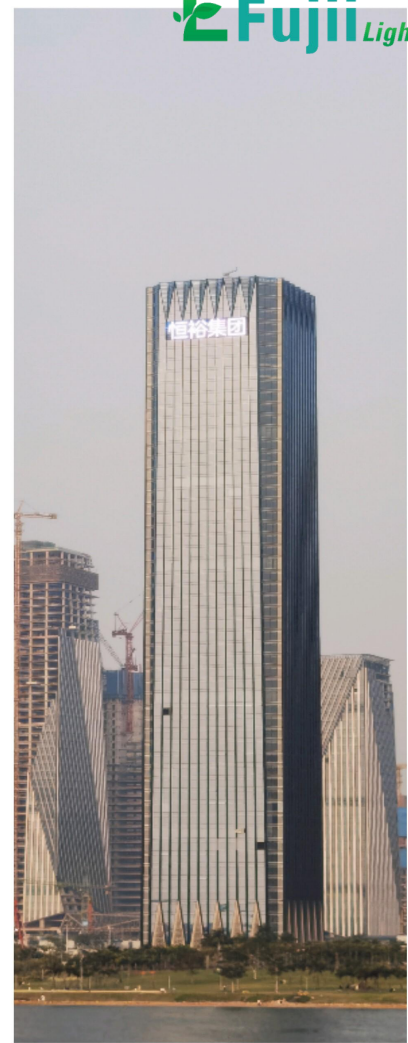


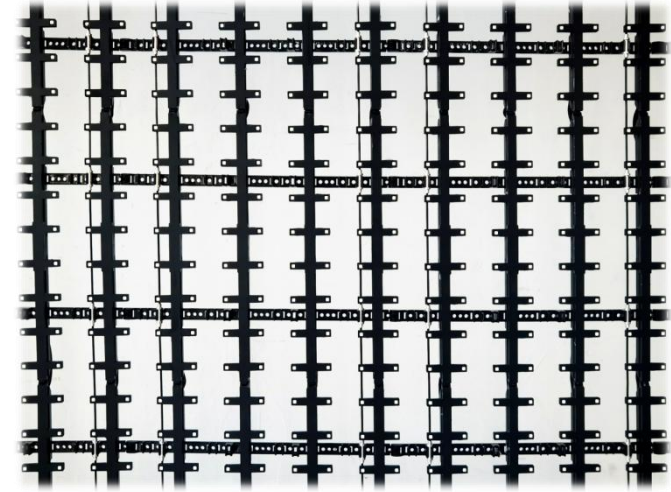
LED Media Facade
 LED Module: G31-50
 Brightness: 13000CD
 Area: 402.5sqm

Design conception:
 LED Facade and control system is separated, the 2in1 control system is hiding in the structure of building.

From inside to see is very tidy, don;t see any cables or structures.

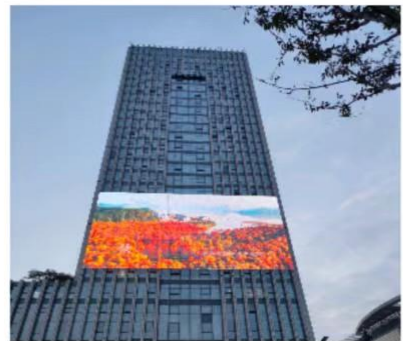
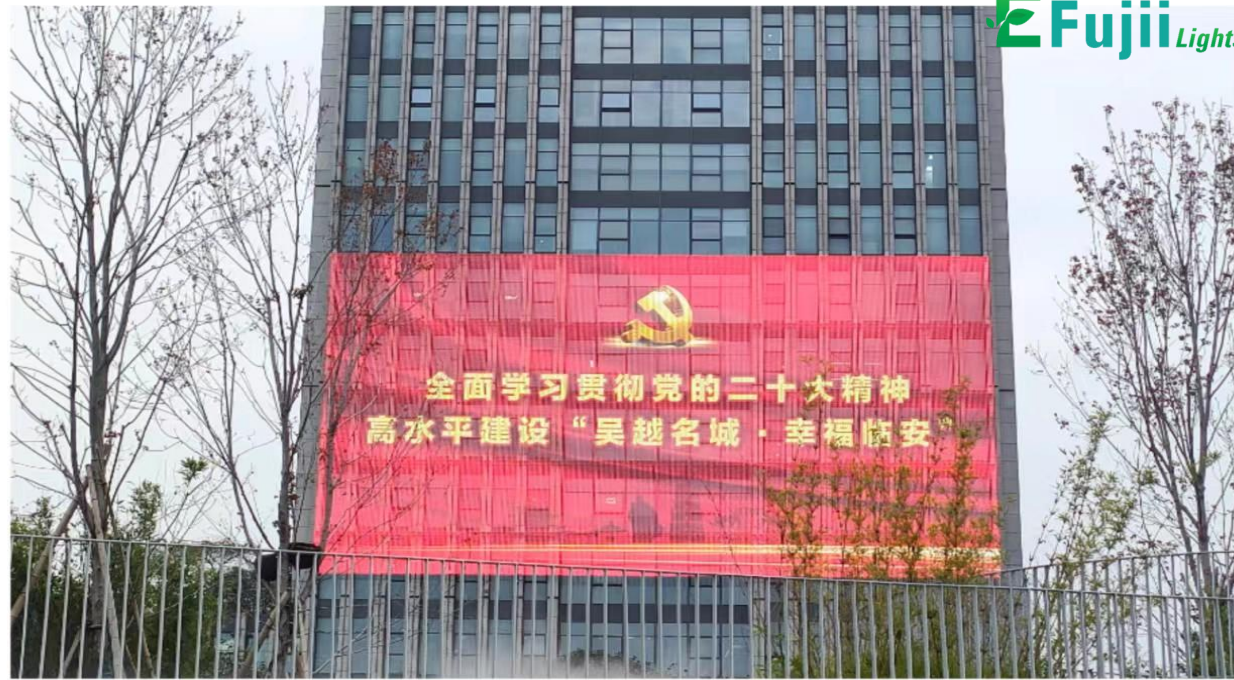
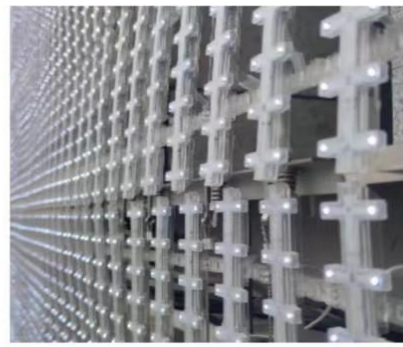


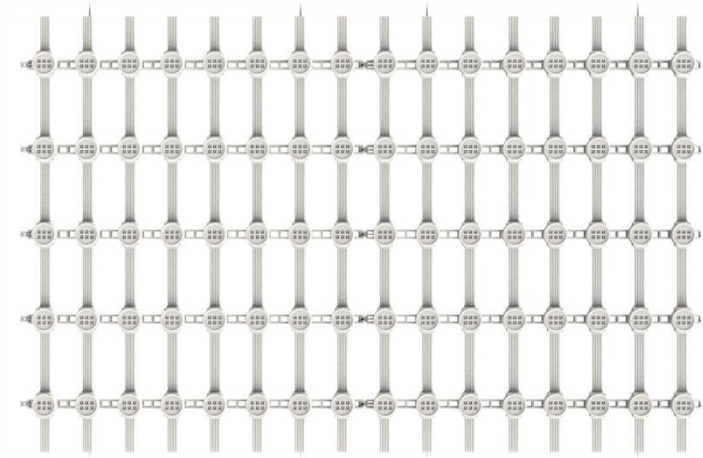




LED Curtain Mehs
LED Module: D31
Brightness: 1800CD
Area: 448sqm

Design conception:
High transparency and invisible design, LED screen and steel structure are invisible while switch off.

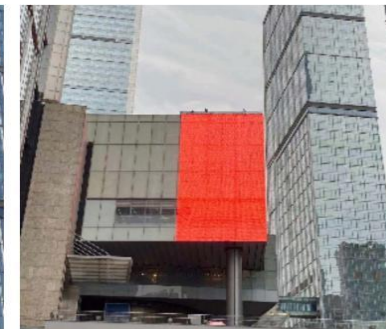
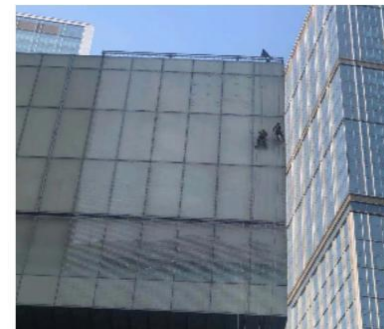
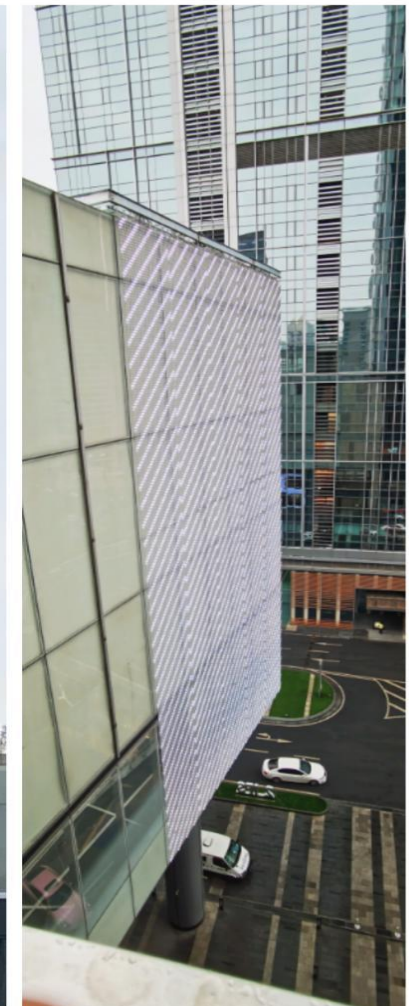


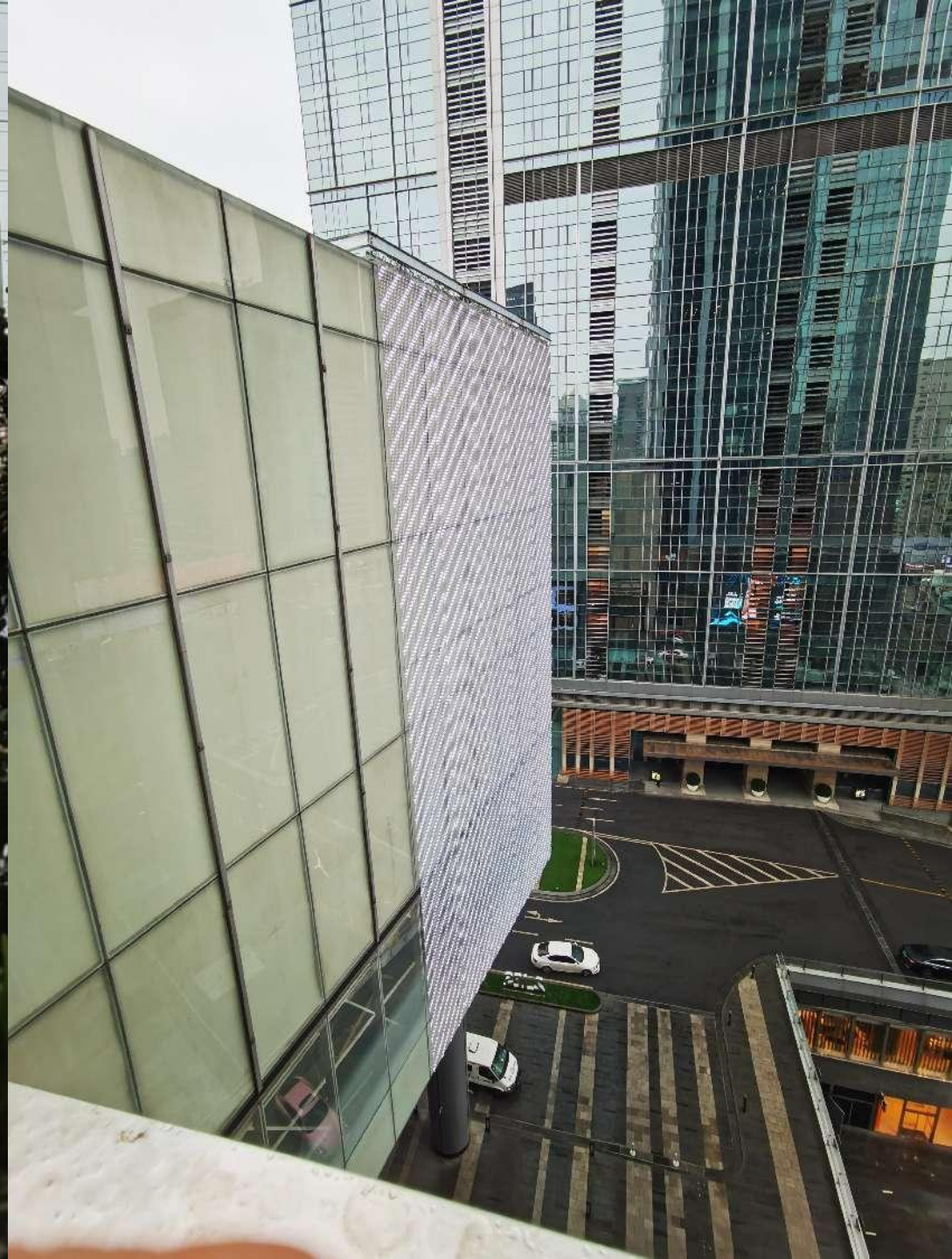


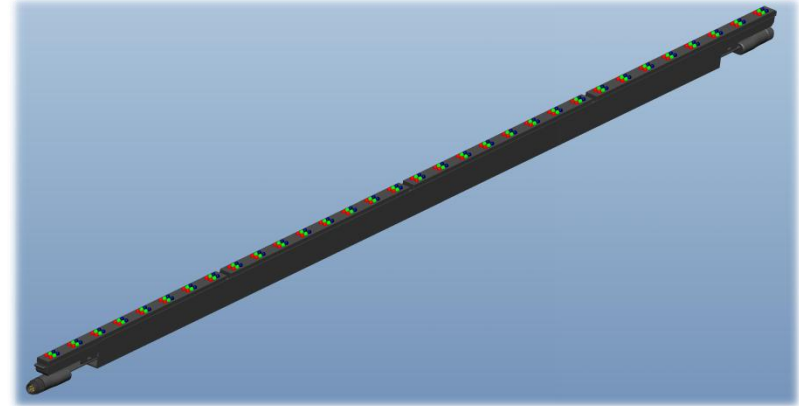
LED Mesh
LED Module: M75
Brightness: 4000CD
Area: 270sqm

Design Conception:

Use strong glue to paste led mesh on the building surface.
High brightness day time visible







LED Video Strip
LED Module: T16+T31
Brightness: 1800CD
Area: 1019+819sqm

Design conception:

Trumpet steel structure, LED Video strip and control system are separated, and hiding inside of architecture structure.



C-Media Tube is a controllable LED intelligent lighting, Applied the places such as Overpass, Building outline, Architecturer advertising, Events,etc.

Advantage:

- 1. Material: Aluminum + PC Mask (Anti-UV,It won' t turn to yellow color in 3 years)**
- 2. Designed with hiding cables,this is avoied Power & Data cables exposed at external.**
- 3. There is no darkness between 2pcs Tubes joint area, The both end of Tube designed with high transparent PC to improved lighting**





Thank you