

Content

Product 1

High definition advertising projection lamp series

Store logo projection light	07-08
Engineering advertising projection lamp	09-10
High power projection lamp	11-12
Multi image switching+rotating projection light	13-14

Product 2

Industrial safety warning projection light series

Industrial warning projection light	15-16
Traffic warning projection light	17-18
Forklift warning projection light	19-20
Linear laser lamp	21-22

Product 3

Indoor and outdoor lighting projection lamp series

Indoor and outdoor pattern projection lamp	23-24
Dynamic water ripple projection lamp	25-26
Multi color water ripple projection lamp	27-28
Dynamic scene projection lamp	29-30
Multi image switching+rotating projection light	31-32
Firefly laser light	33-34
Full color animated laser light	35-36
Indoor and outdoor beam lights	37-38
Intelligent video projector	39-40
Holographic interactive projector	41-42

Supplement

Introduction to Lamp and Lens

Lamp strip introduction	43-44
Projection Lamp Lens Introduction	45-46

Logo advertising projection lamp

High definition advertising projection lamp series products

Product Introduction



- Military grade optical imaging 5x lens, high-definition imaging. Projective graphThe logo and pattern shape of the case or text advertisement can be freely selected. You can manually change the pattern by yourself.
- 360° adjustable, easy to install, can be equipped with a remote control, and the pattern can be easily switched between static and rotating.
- The entire lamp body adopts aviation grade extruded profiles, fully considering the profile dispersionAdding an air-cooled heat dissipation mode on the basis of heat, making heat dissipation more efficient,Safe and reliable.

Applicable scenarios

- Restaurant, underground parking lot, cinema, hotel decoration, bar, signageShowcase locations.

Product Model List



AD-OS(T)N-F



AP-OS(T)N-F



VU-OS(T)N-F



HD-OS(T)N-F

List of Product Parameter Information

Product name ▶ Logo Projection Lamp	Power ▶ 8-45W
Luminous flux ▶ 130LM/W	Lamp beads ▶ Osram LED beads
Color temperature ▶ 6500-8500K	Working voltage ▶ AC110V-240V
Work environment ▶ -40°C-80°C	Service life ▶ 50000H
Projected scale ▶ 1: (0.21-1) meters adjustable	Projection distance ▶ 2-30m
Waterproof grade ▶ IP40/IP67	Installation method ▶ Surface mount/embedded
Lamp material ▶ High quality aluminum alloy	Functional mode ▶ Static/Rotating

Real time shooting case of logo pattern projection effect

The following projection distance is around 4 meters/dynamic version



Real time shooting case of identification indication projection effect

The following projection distance is about 4 meters/static version



Real time shooting case of text poetry projection effect

The above projection distance is about 4 meters/static version

High power advertising projection lamp

High definition advertising projection lamp series products

Product Introduction

- The lamp housing is made of high-quality aluminum magnesium alloy through extrusion molding, and then made of high-precision Made by CNC lathe, with a sturdy external structure, earthquake resistant, waterproof Dust proof and high temperature resistant.
- Support non-standard customized large light spots, with a large pattern imaging coverage area and high-definition Highlight.
- The pattern can be trapezoidal corrected, with a maximum elevation angle of ± 75 degrees, and the projection direction of the lamp can be adjusted Arbitrary adjustment.
- German Osram light source chip, high brightness and long-lasting, with high saturation of pattern colors, Brightness is clearer.

Applicable scenarios

- Indoor and outdoor engineering advertising projection, wall advertising, park. apply In various projection environments.



Product Model List



HD-OS(T)N-F



AP-OS(T)N-F



DS-OS(T)N-F

List of Product Parameter Information

Product name	▶ High power advertising projection lamp	Power	▶ 40-240W
Luminous flux	▶ 130LM/W	Lamp beads	▶ Osram LED beads
Color temperature	▶ 6500-8500K	Working voltage	▶ AC110V-240V
Work environment	▶ -40°C-80°C	Service life	▶ 50000H
Projected scale	▶ 1: (0.21-1.4) meters adjustable	Projection distance	▶ 5-100m
Waterproof grade	▶ IP40/IP67	Installation method	▶ Surface mount
Lamp material	▶ High quality aluminum alloy	Functional mode	▶ Static/Rotating

Realistic shooting case of graphic advertising projection effect

Support customized design based on images, free one-on-one design



High power building projection lamp

High definition advertising projection lamp series products

Product Introduction

- High power advertising projection, large outdoor low-cost outdoor advertising. 600 meters The dark environment is clearly visible.
- German Osram light source chip, high brightness and long-lasting, with high saturation of pattern colors, Brightness is clearer.
- Taiwan Golden Award Brand Mingwei Power Supply, IP65 waterproof, constant voltage and constant current digital Power supply, multiple protection functions. More stable and secure.

Applicable scenarios

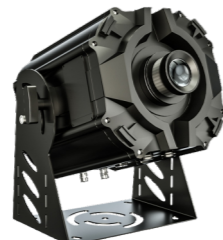
- Suitable for: large-scale outdoor advertising, long-distance lighting engineering, with projection Distant distance, large pattern coverage area, and high brightness and clarity.



Product Model List



HV-OS(T)N-F



DE-OS(T)N-F



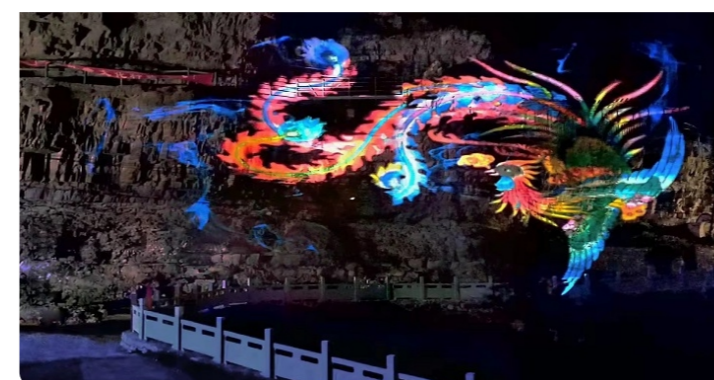
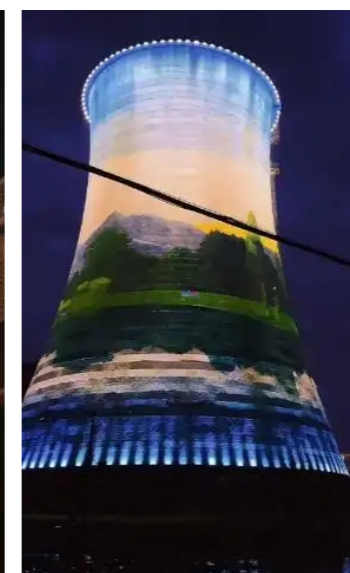
HV-OS(T)N-F

List of Product Parameter Information

Product name	▶ High power advertising projection lamp	Power	▶ 240-1000W
Luminous flux	▶ 130LM/W	Lamp beads	▶ Osram LED beads
Color temperature	▶ 6500-8500K	Working voltage	▶ AC110V-240V
Work environment	▶ -40°C-80°C	Service life	▶ 50000H
Projected scale	▶ 1: (0.21-1.4) meters adjustable	Projection distance	▶ 5-600m
Waterproof grade	▶ IP40/IP67	Installation method	▶ Surface mount
Lamp material	▶ High quality aluminum alloy	Functional mode	▶ Static/Rotating/Multi Image

Real time shooting case of high-power building projection effect

Support customized design based on images, free one-on-one design



Multi image carousel+rotating projection light

High definition advertising projection lamp series products

Product Introduction

- Supports 2-8 figure loop playback and can rotate multiple patterns simultaneously. Multi dimensional display of effects.
- Support DMX512 signal control, which can control the speed, interval time, and dwell time of screen changes. Realize multi screen synchronization, streaming Pursuing and other effects.
- Support remote control, can automatically adjust the change time of each pattern, easy to operate.

Applicable scenarios

- Indoor and outdoor engineering advertisements, theme parks, and municipal engineering lighting.



Product Model List



AR-OS(40-240W)-F(X)



DE-OS(80-240)-F(X)



DE-OS(300-400)-F(X)



DE-OS(500-700)-F(X)

List of Product Parameter Information

Product name	▶ Multi image carousel+rotating projection light	Power	▶ 40-700W
Luminous flux	▶ 130LM/W	Lamp beads	▶ Osram LED beads
Color temperature	▶ 6500-8500K	Working voltage	▶ AC110V-240V
Work environment	▶ -40°C-80°C	Service life	▶ 50000H
Projected scale	▶ 1: (0.21-1.4) meters adjustable	Projection distance	▶ 5-300m
Waterproof grade	▶ IP40/IP67	Installation method	▶ Surface mount
Lamp material	▶ High quality aluminum alloy	Functional mode	▶ Multi image static/rotation

Real time shooting case of multi image advertising projection effect

Support customized design based on images, free one-on-one design



4. Display of Carousel Effect

100 watt 5-meter projection effect



Industrial warning projection light

Industrial safety warning projection lamp series products

Product Introduction

- The outer shell of the lamp is made of high-quality aluminum magnesium alloy, which is extruded and then made of Made by high-precision CNC lathe processing, with a sturdy external structure, earthquake resistance, and waterproofing Dust proof and high temperature resistant.
- The lamp is equipped with a 3.0 high-strength double twisted (multi strand) steel wire safety rope, Used to connect lighting fixtures and mounting brackets, with multiple safety protections.
- The light source of the lamp adopts the Osram light source chip imported from Germany, with a 3-year light attenuation $\leq 3\%$, light source lifespan ≥ 8000 hours. The entire product has a 2-year warranty.
- The driving power supply adopts Taiwan Golden Award brand Mingwei power supply, IP67 waterproof, Heng Voltage constant current digital power supply with multiple protection functions for short circuit, overvoltage, and over temperature. More stable and secure.

Applicable scenarios

- Brand partnerships of industrial groups such as steel, aluminum plants, and coal mines across the country Business.



Product Model List



DS-OS(T)N-F



HV-OS(T)N-F



HV-OS(T)N-F

List of Product Parameter Information

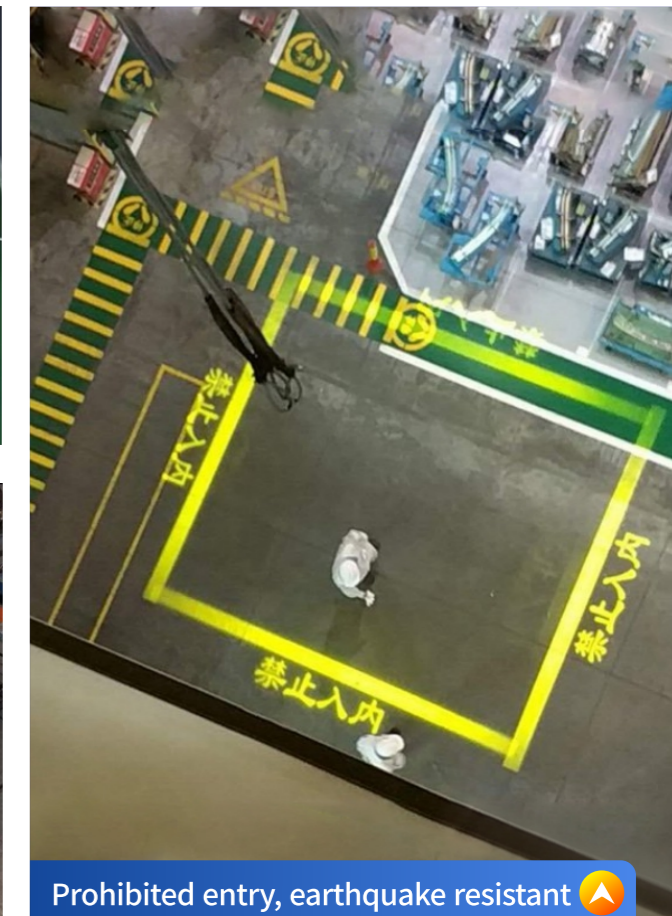
Product name	▶ Industrial warning projection light	Power	▶ 40-700W
Luminous flux	▶ 130LM/W	Lamp beads	▶ Osram LED beads
Color temperature	▶ 6500-8500K	Working voltage	▶ AC110V-240V /customizable 380V
Work environment	▶ -40°C-80°C	Service life	▶ 50000H
Projected scale	▶ 1: (0.21-1.4) meters adjustable	Projection distance	▶ 5-300m
Waterproof grade	▶ IP40/IP67	Installation method	▶ Surface mount
Lamp material	▶ High quality aluminum alloy	Functional mode	▶ Static/Rotating
Features and Technical Support	▶ Support radar sensing, infrared sensing, camera sensing, and voice broadcasting		

Real time shooting case of industrial warning projection effect

Support customized design based on images, free one-on-one design



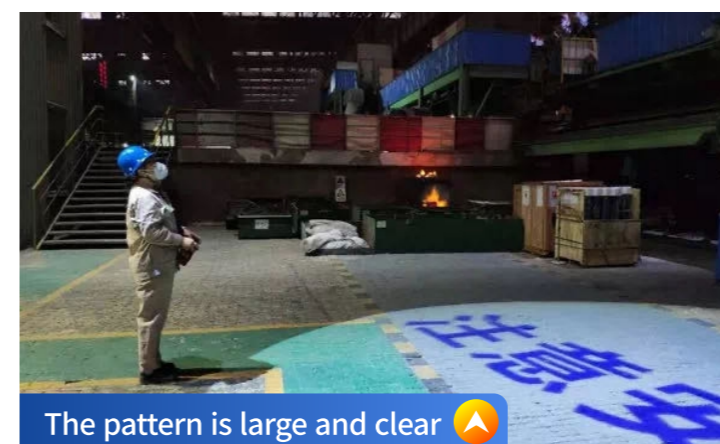
High temperature resistance



Prohibited entry, earthquake resistant



Supports 380V voltage



The pattern is large and clear



Support free correction



Intersection signage and dust prevention

Linear laser projection lamp

Industrial safety warning projection lamp series products

Product Introduction

- The lighting fixtures use imported light source modules with clear lines.
- High brightness, uniform luminosity, and stable performance.
- U-shaped thickened bracket, stable and durable, quick to install.



Applicable scenarios

- Industrial plants, underground garages, warehouses, etc.

Product Model List



PO-A Series - SL



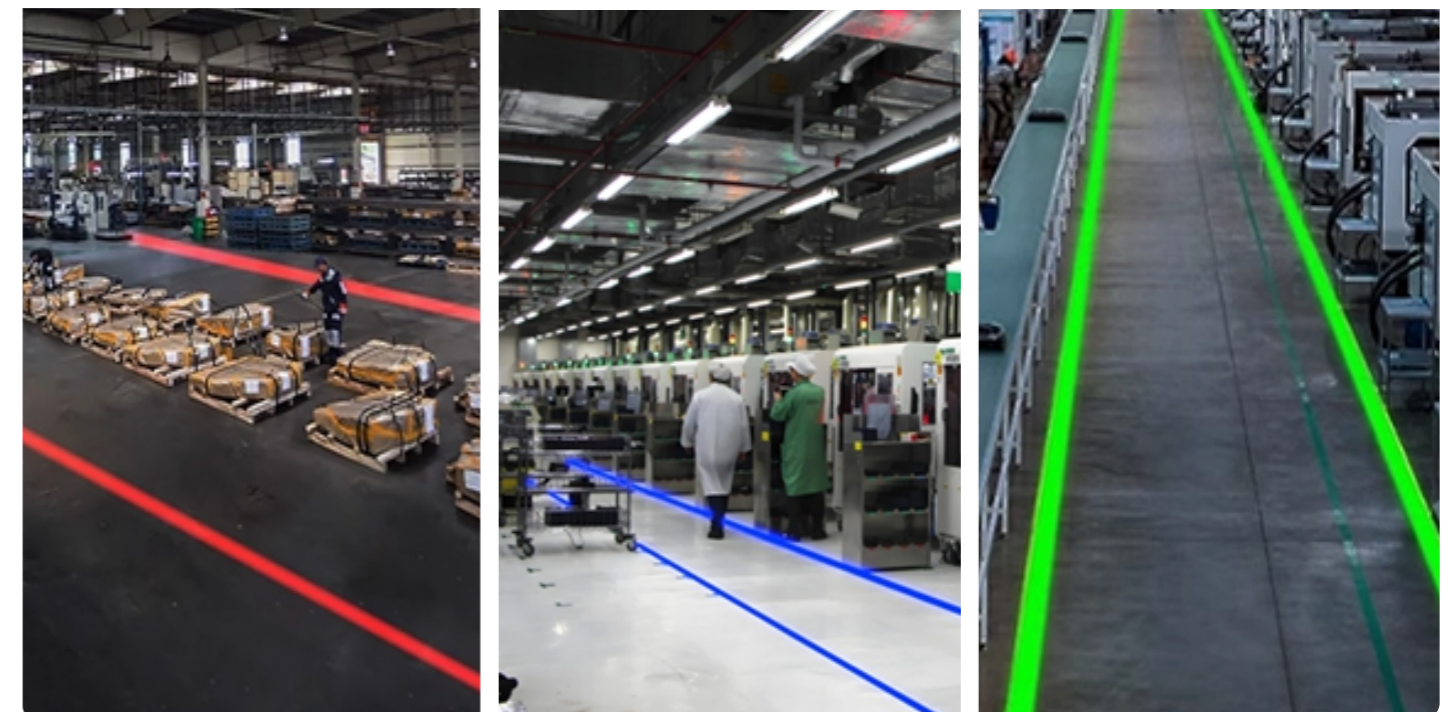
PO-B Series - SL

List of Product Parameter Information

Product name	▶ Linear laser projection lamp	Power	▶ 10-35W
light source	▶ Imported laser module	Working voltage	▶ AC110V-240V /customizable 380V
Work environment	▶ -40°C-80°C	Service life	▶ 50000H
Projected scale	▶ 1: (1-3) meters adjustable	Projection distance	▶ 2-30m
Waterproof grade	▶ IP40/IP67	Installation method	▶ Surface mount
Lamp material	▶ High quality aluminum alloy	Color options	▶ Red/Green/Blue /Customization supported

Case Study of One Line Laser Projection Effect

Tri color laser optional, supports customization



Forklift warning projection light

Industrial safety warning projection lamp series products

Product Introduction

- The lighting fixtures use imported light source modules with clear lines.
- High brightness, uniform luminosity, and stable performance.
- U-shaped thickened bracket, stable and durable, quick to install.



Applicable scenarios

- Forklifts used by major brands across the country

Product Model List



AP-OS(T)N-F



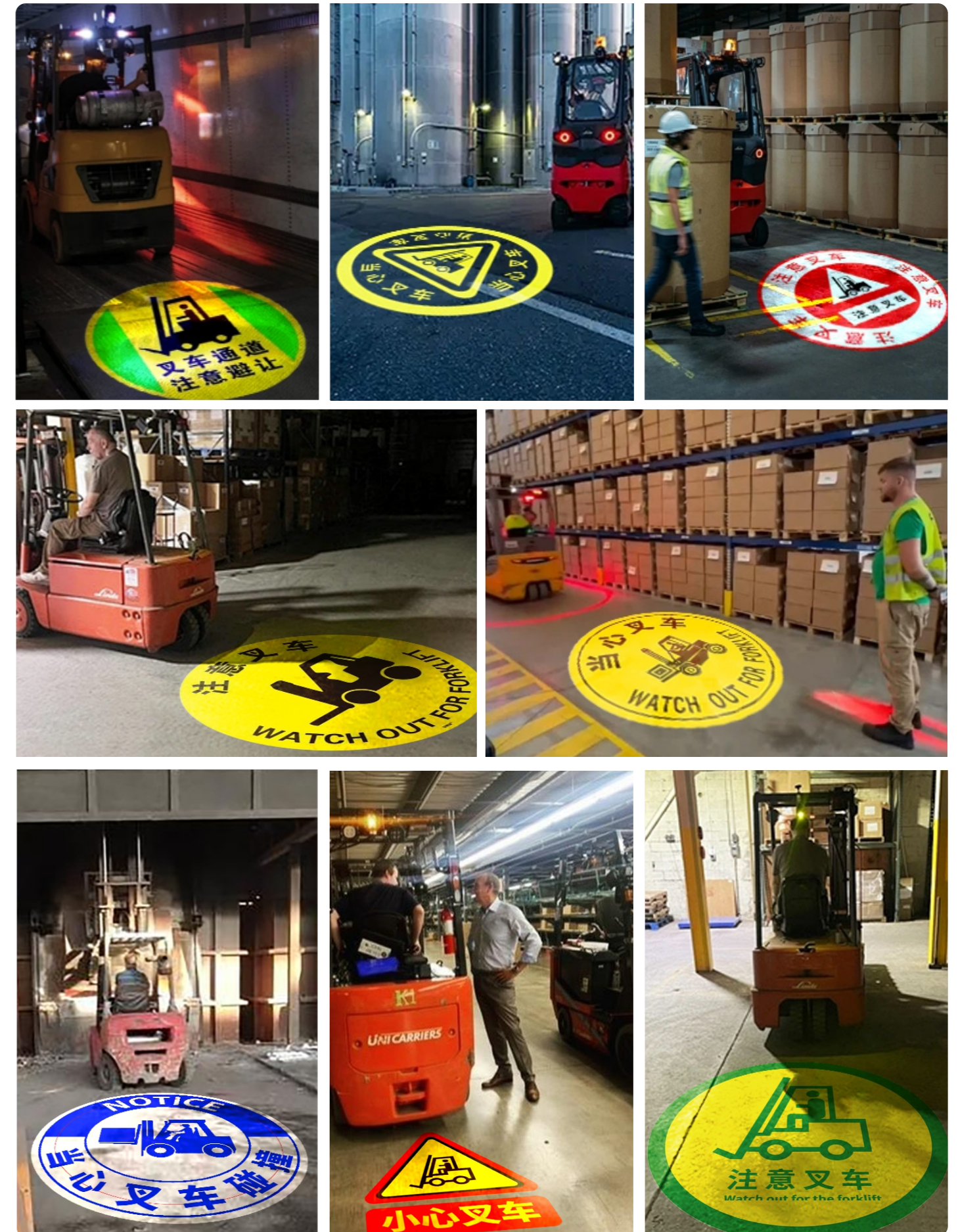
DS-OS(T)N-F

List of Product Parameter Information

Product name	▶ Forklift warning projection light	Power	▶ 16-60W
Luminous flux	▶ 130LM/W	Lamp beads	▶ Osram LED beads
Color temperature	▶ 6500-8500K	Working voltage	▶ AC110V-240V
Work environment	▶ -40°C-80°C	Service life	▶ 50000H
Projected scale	▶ 1: (0.21-1) meters adjustable	Projection distance	▶ 2-30m
Waterproof grade	▶ IP40/IP67	Installation method	▶ Surface mount
Lamp material	▶ High quality aluminum alloy	Functional mode	▶ Static/Rotating

Case Study of Forklift Warning Projection Effect

Support customized design based on images, free one-on-one design



Traffic safety projection lamp

Industrial safety warning projection lamp series products

Product Introduction

- Targeting traffic signal sensing systems, utilizing traffic safety projection and red Green light synchronization, voice system connection broadcasting. Ensure traffic safety and order.
- Using a combination of 6 K9 broadband yellow green film high-definition lenses for imaging, road spots The horse spot pattern has a large coverage area and is characterized by high brightness and clarity.
- The product supports non-standard customization, the pattern can be trapezoidal corrected, and the maximum elevation angle ± 75 degrees, the projection direction of the lamp can be adjusted arbitrarily.

Applicable scenarios

- Road, traffic, traffic light intersections, communities, construction sites, and other traffic safety warnings.



Product Model List

Support traffic voice playback



Support free calibration service



Support large speckle imaging

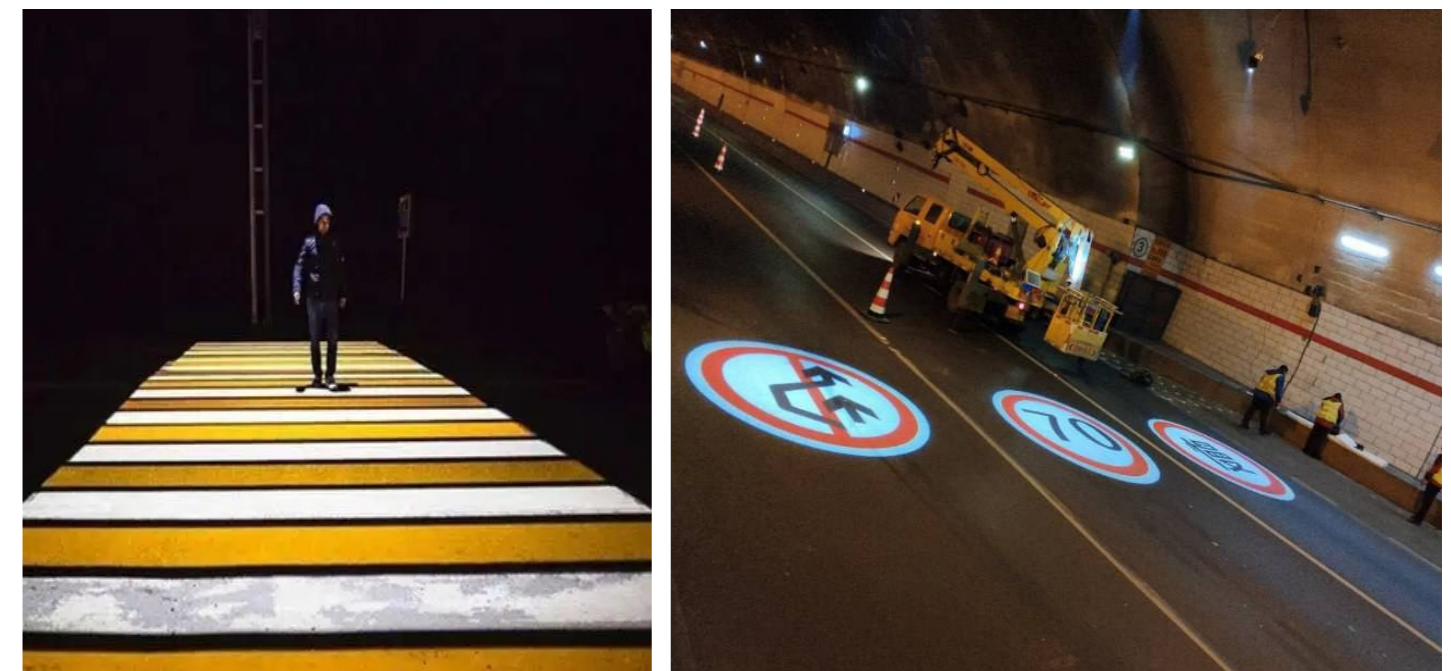


List of Product Parameter Information

Product name	▶ Traffic Safety Projection Light	Power	▶ 60-1000W
Luminous flux	▶ 130LM/W	Lamp beads	▶ Osram LED beads
Color temperature	▶ 6500-8500K	Working voltage	▶ AC110V-240V
Work environment	▶ -40°C-80°C	Service life	▶ 50000H
Projected scale	▶ 1: (0.21-1.4) meters adjustable	Projection distance	▶ 5-300m
Waterproof grade	▶ IP40/IP67	Installation method	▶ Surface mount
Lamp material	▶ High quality aluminum alloy	Functional mode	▶ Static/Rotating
Features and Technical Support	▶ Support radar sensing, infrared sensing, camera sensing, and voice broadcasting		

Real time shooting case of traffic safety projection effect

Support customized design based on images, free one-on-one design



Creative Pattern Projection Lamp

Indoor and outdoor lighting projection lamp series products

Product Introduction

- All aluminum alloy metal shell, integrated die-casting molding, high heat dissipation efficiency and Quick, the product has a long lifespan.
- German Osram light source chip, with low light attenuation and high brightness for long-lasting brilliance.
- Military grade optical 5x lens, utilizing high transmittance and high-temperature resistant lenses, with a light flux of 130LM/W, providing clearer projection.

Applicable scenarios

- Indoor and outdoor advertising, wall and building lighting, park and scenic area lighting, etc.



Product Model List



HD-OS(T)N-F



AP-OS(T)N-F



AP-OS(T)N-F



DS-OS(T)N-F

List of Product Parameter Information

Product name	▶ Creative Pattern Projection Lamp	Power	▶ 40-240W
Luminous flux	▶ 130LM/W	Lamp beads	▶ Osram LED beads
Color temperature	▶ 6500-8500K	Working voltage	▶ AC110V-240V
Work environment	▶ -40°C-80°C	Service life	▶ 50000H
Projected scale	▶ 1: (0.21-1.5) meters adjustable	Projection distance	▶ 2-30m
Waterproof grade	▶ IP40/IP67	Installation method	▶ Surface mount/embedded
Lamp material	▶ High quality aluminum alloy	Functional mode	▶ Static/Rotating/Walk about

Realistic shooting case of creative pattern projection effect
Support customized design based on images, free one-on-one design



Dynamic water pattern projection lamp

Indoor and outdoor lighting projection lamp series products

Product Introduction

- Realistic dynamic water ripple flow and wave rolling effect, creating a world of flowing light and colorful water. Paired with pattern projection effects, it is even more harmonious Yizhang.
- Support water ripple color customization. Multiple colors can be rotated for switching. Coverage Featuring large size and clear brightness, it can seamlessly connect multiple devices.
- Supports DMX512 signal control, enabling control of image transformation speed, interval time and dwell time, achieving multi screen synchronization, flow Chasing and other effects.

Applicable scenarios

- The product is suitable for creating indoor and outdoor atmosphere, shopping malls, restaurant squares, Parks, tunnels, lighting projects, municipal engineering, and landmark building owners Question Park.



Product Model List



HD-OS(T)N-SW



DS-OS(T)N-SW



DE-OS(T)N-SW



HV-OS(T)N-SW

List of Product Parameter Information

Product name	▶ Dynamic water pattern projection lamp	Power	▶ 40-800W
Luminous flux	▶ 130LM/W	Lamp beads	▶ Osram LED beads
Color temperature	▶ 6500-8500K	Working voltage	▶ AC110V-240V
Work environment	▶ -40°C-80°C	Service life	▶ 50000H
Projected scale	▶ 1: (0.21-1.5) meters adjustable	Projection distance	▶ 2-100m
Waterproof grade	▶ IP40/IP67	Installation method	▶ Surface mount/embedded
Lamp material	▶ High quality aluminum alloy	Functional mode	▶ Dynamics

Real time shooting case of dynamic water pattern projection effect

Available in multiple colors, supporting customization



Cultural and tourism characteristic town



Creating an Atmosphere in Municipal Parks



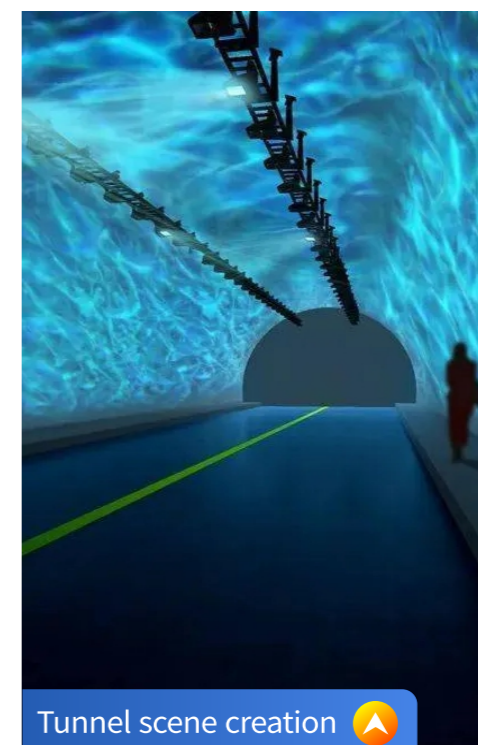
Creating a Museum Atmosphere



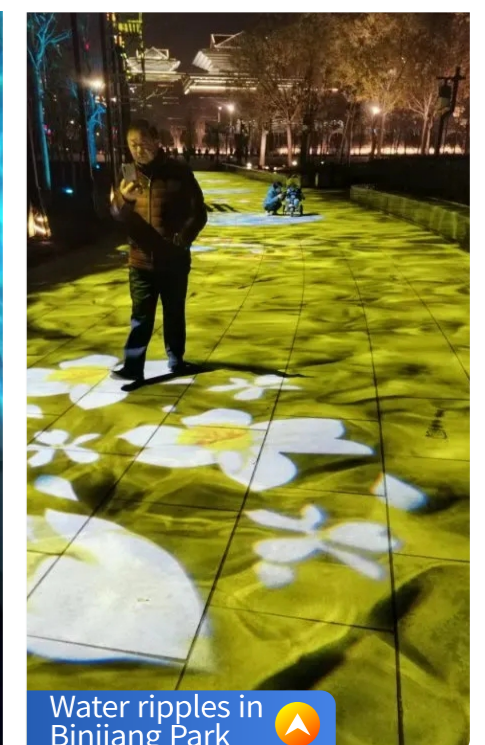
Creating an atmosphere for commercial activities



Theme Park Atmosphere



Tunnel scene creation



Water ripples in Binjiang Park

Multi color switching water pattern lamp

Indoor and outdoor lighting projection lamp series products

Product Introduction

- Dynamic water pattern effect, atmosphere creation, eye-catching in 1 second.
- The light source adopts Osram light source chip.
- 1: 1 large spot lens, high-definition imaging over a large area.
- DMX512 is optional (multiple linked, synchronous switching).
- Color exchange, interweaving light and shadow, filling the atmosphere!



Applicable scenarios

- Indoor and outdoor atmosphere rendering, can be used as indoor stage background decoration, scenic area engineering lighting, etc., with better pattern effects.

Product Model List



AR-OS(T)N-SW



DE-OS(T)N-SW



DE-OS(T)N-SW



DE-OS(T)N-SW

List of Product Parameter Information

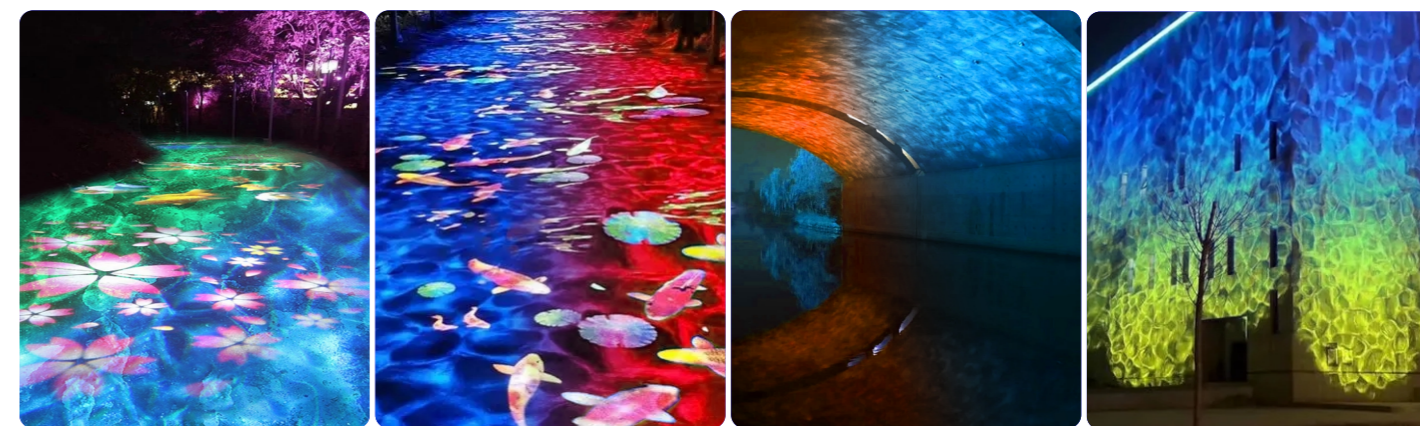
Product name	▶ Multi color water pattern projection lamp	Power	▶ 40-800W
Luminous flux	▶ 130LM/W	Lamp beads	▶ Osram LED beads
Color temperature	▶ 6500-8500K	Working voltage	▶ AC110V-240V
Work environment	▶ -40°C-80°C	Service life	▶ 50000H
Projected scale	▶ 1: (0.21-1.5) meters adjustable	Projection distance	▶ 2-30m
Waterproof grade	▶ IP40/IP67	Installation method	▶ Surface mount/embedded
Lamp material	▶ High quality aluminum alloy	Functional mode	▶ Dynamic/Switching



Multi color water pattern carousel display
100 watt 5-meter projection effect

Case Study of Gradient Effect of Water Pattern Lamp

Available in multiple colors, supporting customization



Multi color water pattern+pattern lamp projection effect real-life case

Support customized design based on images, free one-on-one design



Dynamic scene projection lamp

Indoor and outdoor lighting projection lamp series products

Product Introduction

- Realistic dynamic blue sky and white clouds scene, soft lighting, eye protection, suitable for bright tunnels Transforming and antique cultural landscapes.
- The dynamic model resembles a spring breeze brushing against the face, peach blossoms flying all over the sky, autumn breeze blowing down, like shadows accompanying, Hundreds of pattern models support customization.
- Simulate dynamic lunar eclipse changes and the appearance of Tengu stealing the moon, with realistic and beautiful effects. Snowflakes dance in the sky, and combined with lunar eclipses, create a scene of wind, flowers, snow, and moon effects.
- The product can create atmosphere projection effects for various types of scenes The effect supports customization of more atmosphere scene projection details. You can consult customer service.

Applicable scenarios

- Creating indoor and outdoor atmosphere, lighting up shopping malls, restaurant squares, parks, and tunnels Lighting project, municipal engineering, landmark building theme park.



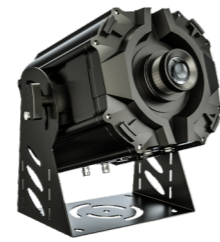
Product Model List



DS-OS(T)N-F



DE-OS(T)N-F



DE-OS(T)N-F



HV-OS(T)N-F

List of Product Parameter Information

Product name	▶ Dynamic scene projection lamp	Power	▶ 40-1000W
Luminous flux	▶ 130LM/W	Lamp beads	▶ Osram LED beads
Color temperature	▶ 6500-8500K	Working voltage	▶ AC110V-240V
Work environment	▶ -40°C-80°C	Service life	▶ 50000H
Projected scale	▶ 1: (0.21-1.5) meters adjustable	Projection distance	▶ 5-200m
Waterproof grade	▶ IP40/IP67	Installation method	▶ Surface mount
Lamp material	▶ High quality aluminum alloy	Functional mode	▶ Dynamic/Static/Moving/Floating

Real time shooting case of dynamic scene projection effect

Support customized design based on images, free one-on-one design



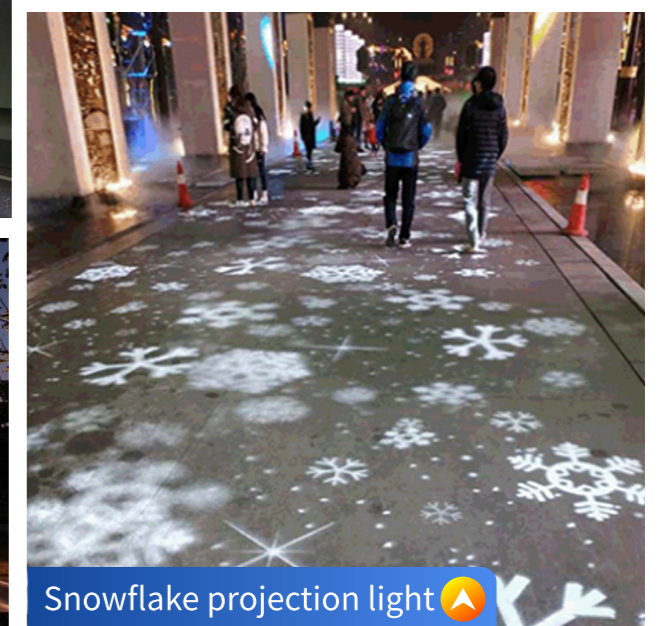
Dynamic floating shadow light



Ancient poetry playback projection



Blue sky and white clouds projection



Snowflake projection light



Dynamic fish school projection



Dynamic lunar eclipse projection



Cosmic Starry Sky Projection

Multi image carousel+rotating projection light

Indoor and outdoor lighting projection lamp series products

Product Introduction

- Supports 2-8 figure loop playback and can rotate multiple patterns simultaneously. Multi dimensional display of effects.
- Support DMX512 signal control, which can control the speed, interval time, and dwell time of screen changes. Realize multi screen synchronization, streaming Pursuing and other effects.
- Support remote control, can automatically adjust the change time of each pattern, easy to operate.

Applicable scenarios

- Indoor and outdoor engineering advertisements, theme parks, and municipal engineering lighting.



Product Model List



DE-OS(40-60)-F(X)



DE-OS(80-240)-F(X)



DE-OS(300-400)-F(X)



DE-OS(500-700)-F(X)

List of Product Parameter Information

Product name	▶ Multi image carousel+rotating projection light	Power	▶ 40-700W
Luminous flux	▶ 130LM/W	Lamp beads	▶ Osram LED beads
Color temperature	▶ 6500-8500K	Working voltage	▶ AC110V-240V
Work environment	▶ -40°C-80°C	Service life	▶ 50000H
Projected scale	▶ 1: (0.21-1.4) meters adjustable	Projection distance	▶ 5-100m
Waterproof grade	▶ IP40/IP67	Installation method	▶ Surface mount
Lamp material	▶ High quality aluminum alloy	Functional mode	▶ Dynamic/Switching

Case study of multi image projection effect in cultural and tourism lighting

Support customized design based on images, free one-on-one design



4. Display of Carousel Effect

Free one-on-one design patterns

Firefly laser light

Indoor and outdoor lighting projection lamp series products

Product Introduction

- Simulate clear fireflies and twinkling stars in childhood, with sparkling stars shining brightly, full of Realistic effect of Tianfei Dance. Paired with different projection groups in different scene spaces Combined, the effect is better.
- The product can activate the flash mode. The light color can be selected from various options such as pink, green, blue, white, yellow, and red. It also supports color-changing mode.
- Multiple firefly patterns to choose from. Adjustable movement, stillness, and rotation speed.

Applicable scenarios

- Indoor bar, cinema lighting atmosphere creation, outdoor scenic spots, parks, amusement parks Wait for the scene.



Product Model List



PO-OTN-FS



DE-OTN-FS



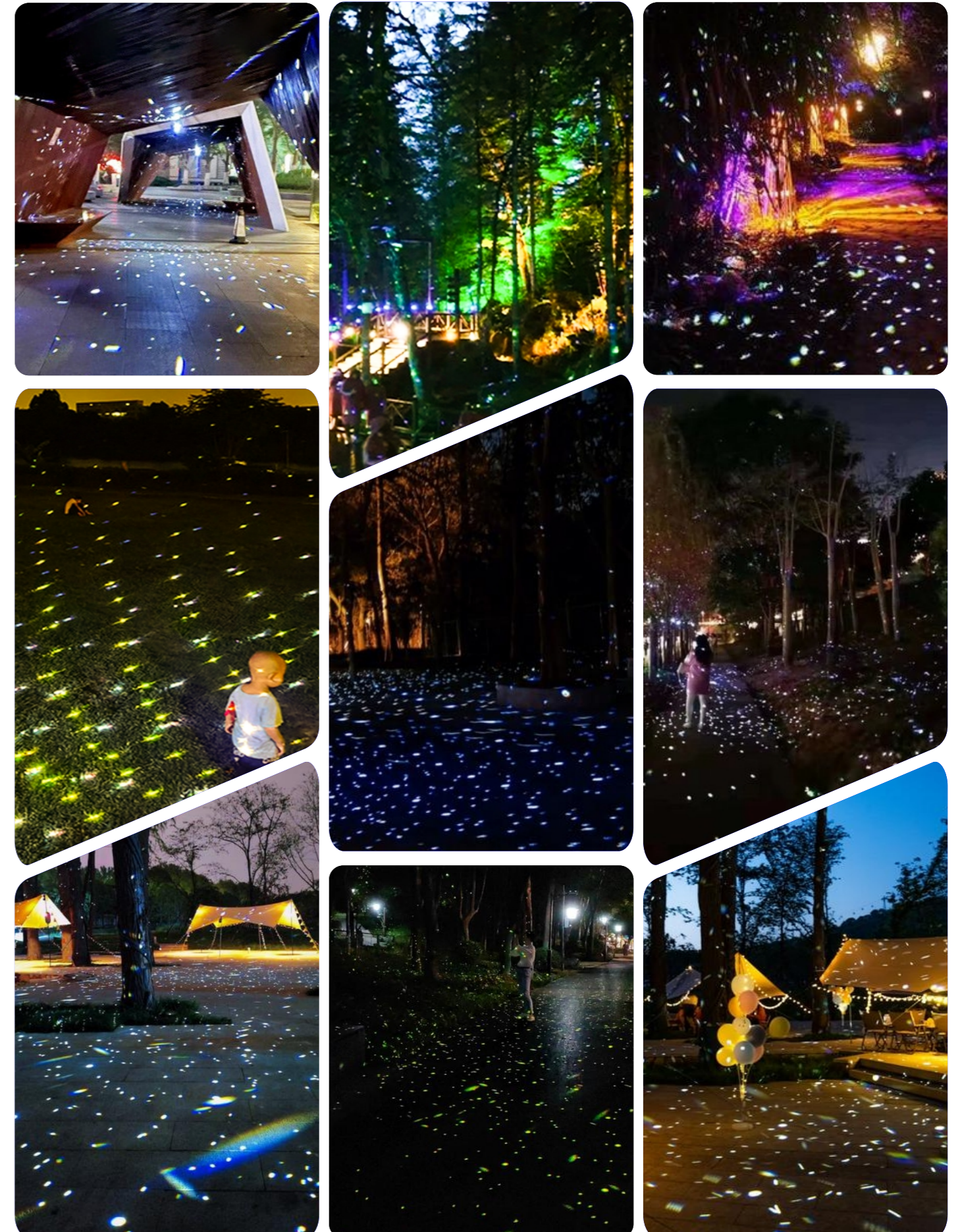
DS-OTN-FS

List of Product Parameter Information

Product name	▶ Firefly laser light	Power	▶ 40-700W
Luminous flux	▶ 130LM/W	Lamp beads	▶ Class38 Laser Fluorescence Technology
Color temperature	▶ 6500-8500K	Working voltage	▶ AC110V-240V
Work environment	▶ -40°C-80°C	Service life	▶ 50000H
Waterproof grade	▶ IP40/IP67	Projection distance	▶ 2-30m
Lamp material	▶ High quality aluminum alloy	Installation method	▶ Surface mount
Product Features	▶ Support customization of any color	Light mode	▶ Monochrome/Blinking/Breathing/Color Change

Firefly projection effect real-life case

Available in multiple colors, supporting customization



Outdoor waterproof laser light

Indoor and outdoor lighting projection lamp series products

Product Introduction

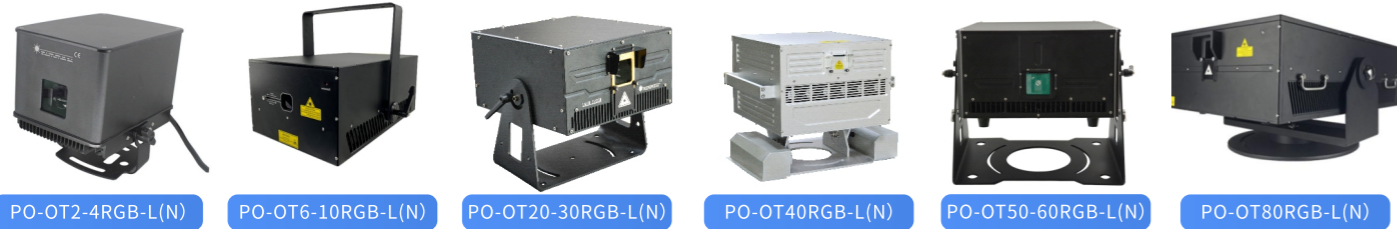
- Scenic area lighting adds beautiful colors to the scenic area.
- Landmark features enhance tourists' impression of the city.
- Atmosphere rendering, adding atmosphere to large-scale events such as music festivals.
- Advertising projection and distinctive advertisements are more attractive to consumers.

Applicable scenarios

- Indoor version suitable for: stage, DJ, Performances, disco, clubs, bars, etc.
- Outdoor version is suitable for outdoor advertising, outdoor scenic spots, parks, etc.



Product Model List



PO-OT2-4RGB-L(N)

PO-OT6-10RGB-L(N)

PO-OT20-30RGB-L(N)

PO-OT40RGB-L(N)

PO-OT50-60RGB-L(N)

PO-OT80RGB-L(N)

List of Product Parameter Information

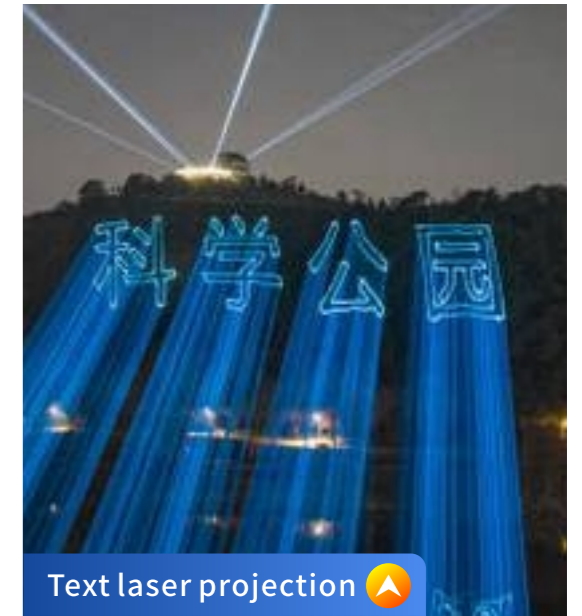
Product name	▶ Outdoor waterproof laser light	Power	▶ 2-80W
Lasers	▶ All solid state semiconductor	Working voltage	▶ AC110V-240V
work environment	▶ 15-80KPPS high-speed scanning galvanometer	Divergence angle	▶ <1.2mrad
Galvanometer	▶ 15-60Kpps	Wavelength	▶ 520nm/630nm/450nm
Service life	▶ 10000 hours	Waterproof grade	▶ IP65
Laser software	▶ Pangolin FB4 laser software	operation temperature	▶ -10-45°
Cooling method	▶ Integrated aluminum radiator, air-cooled cooling for the entire machine		
control model	▶ DMX512, Master slave effect, Ethernet, Art Net, SD card		
Animated Laser	▶ Full color animation laser, using high-power laser red green blue high-speed galvanometer scanning speed, the pattern has effects such as pen breakage, flicker, rotation and rolling, movement, stretching, scaling, gradient, etc. It has more than 200 types of beams and animation patterns built-in, which can be used for animation performance, laser advertising projection, etc		

Outdoor waterproof laser effect real-life case

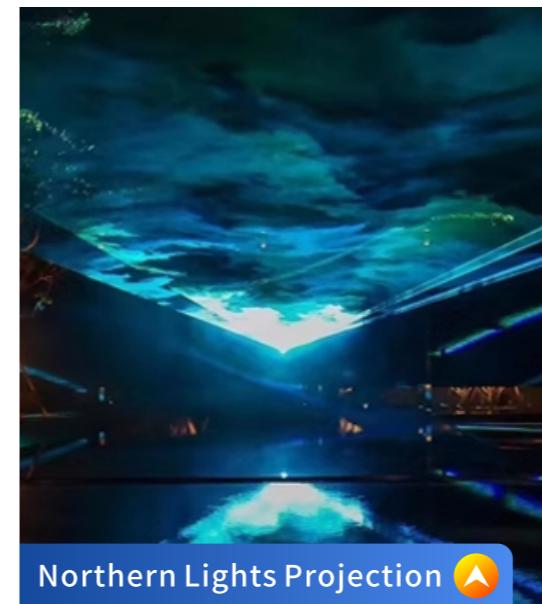
A hundred patterns and text animation effects, full-color laser lines



Animated laser projection



Text laser projection



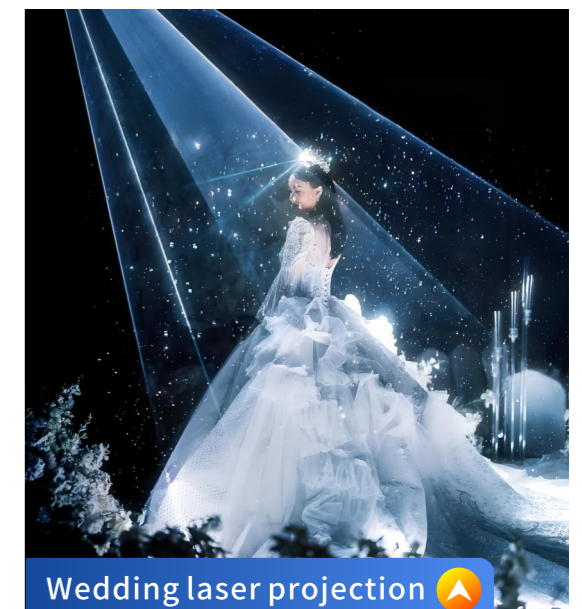
Northern Lights Projection



Water curtain laser projection



Time Space Tunnel Projection



Wedding laser projection

Indoor and outdoor beam ambient lighting

Indoor and outdoor lighting projection lamp series products

Product Introduction

- The entire machine's optical path and power layer are completely sealed, with optoelectronic isolation design, achieving IP65 protection and stronger environmental adaptability; Better waterproof performance and can be used in various harsh weather conditions.
- Imported high brightness LED beads, thickened luminous aperture, strong diameter beam. Higher brightness, less light loss, longer lifespan, and good stability performance



HM-PBL(N)-PS

Applicable scenarios

- Parks, landmarks, wedding banquets, rooftops, riverside bridges, outdoor lighting projects, stage performances, etc.

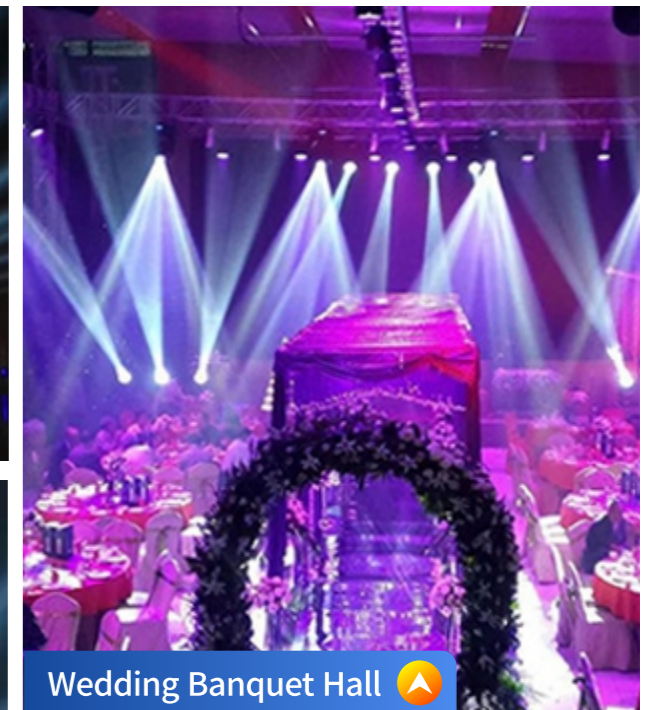
Product Model List

Product name	▶ Outdoor waterproof beam light	Power	▶ 260-470W
Working voltage	▶ AC110-240V 50-60HZ	Bulb Model	▶ Youdeng/Osram
Color palette	▶ 14 colors+white light rotation	Panel	▶ Inductive button
Control model	▶ DMX512/master-slave/automatic	Optical lens	▶ Color coated lens
Dimming	▶ 0-100% electronic dimming	Effect Wheel	▶ Rotating 8-sided prism and 6-sided mirror
Angle	▶ Horizontal 540, vertical 270 °	Protection grade	▶ IP65
Product size	▶ 390*320*720MM	Product weight	▶ 22-30KG
Optical system	▶ Electric focusing, beam angle 3.8 ° -45 ° linearly adjustable		
Gobo	▶ 14 pattern effects, 9 rotating pattern effects		
Fixed color	▶ 14 light strips (adjustable half color effect)+rainbow effect 		
Double pattern	▶ 9 glass rotating patterns, 14 fixed patterns 		
Atomization	▶ An independent atomization effect, with a soft and natural control channel for the light spot		
Thoroughfare	▶ 18 International Standard DMX512 Channel Mode		

Application scenario projection real-life case of beam lamp



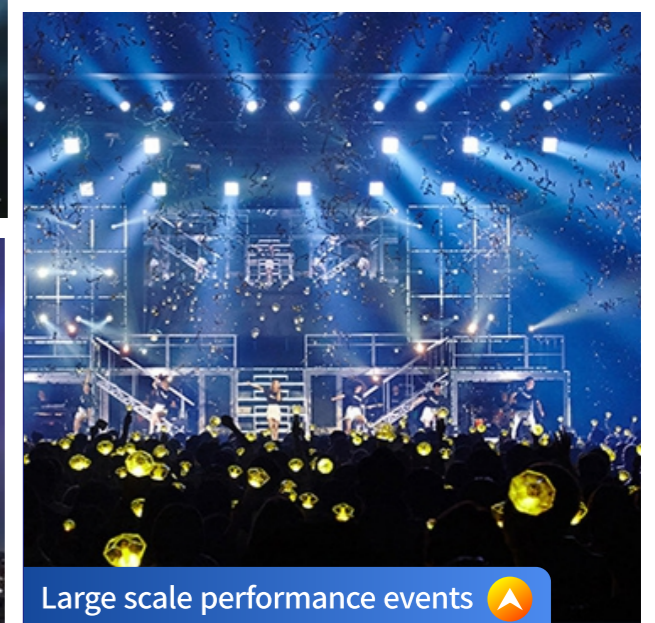
Park landmarks



Wedding Banquet Hall



Roof lighting



Large scale performance events



Bridge lighting



Outdoor Lighting Engineering



Large stage atmosphere

Intelligent video projector

Indoor and outdoor lighting projection lamp series products

Product Introduction

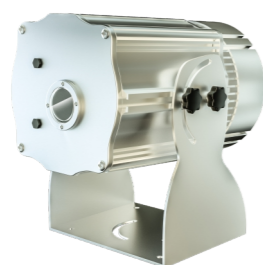
- Support video playback, customize playback content
- Can store a large number of video images with rich content.
- Six way correction, autofocus, achieving non trapezoidal correction, more accurate and faster.

Applicable scenarios

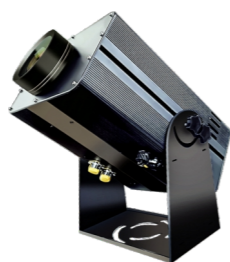
- Building video advertisements, exhibition halls, residential areas, parks, store promotions, wall lighting, atmosphere creation, etc.



Product Model List



AT-OTW-U



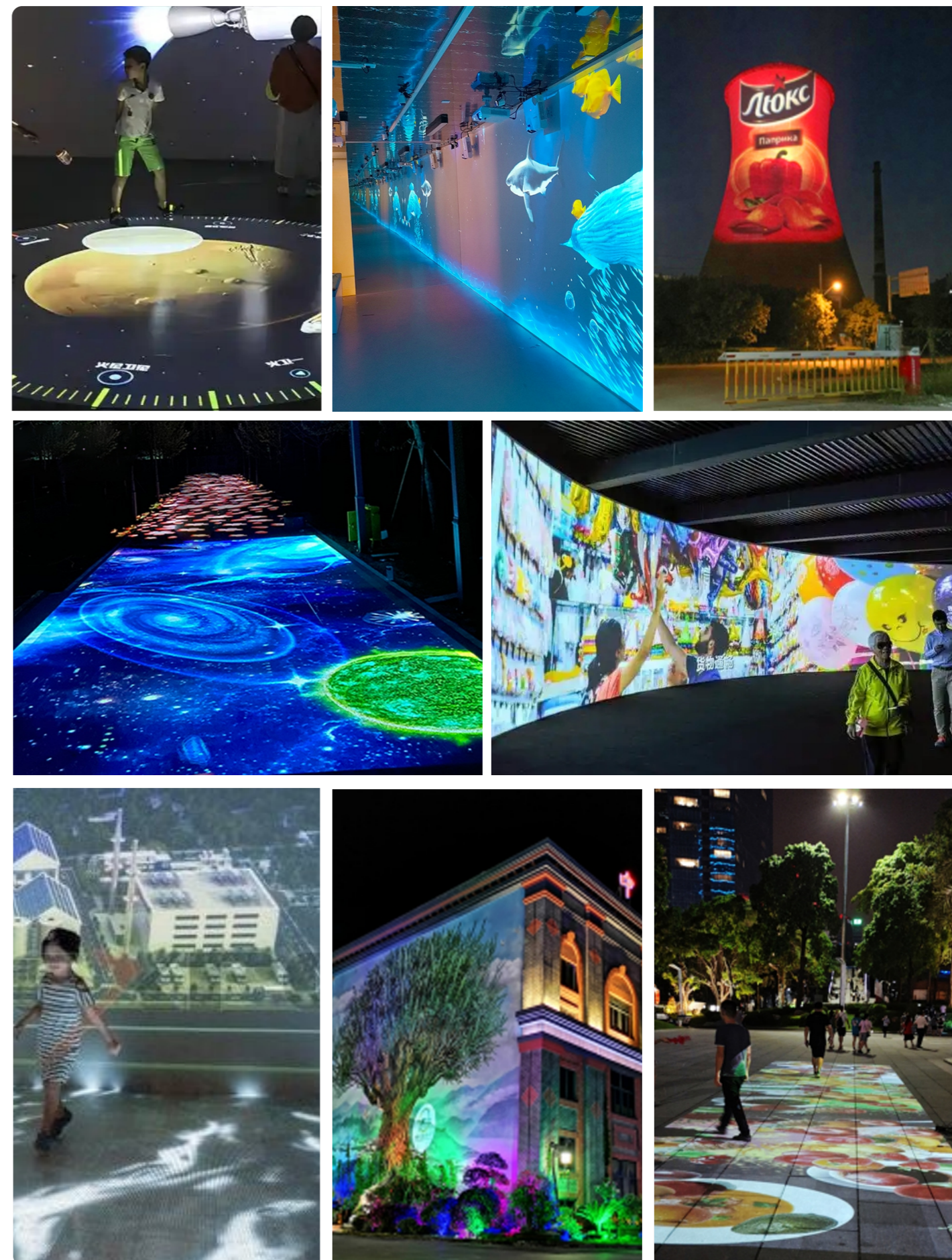
AT-OTW-VP

List of Product Parameter Information

Product name	▶ Intelligent video projector	Brightness	▶ 4000-6000LM
Luminous flux	▶ 130LM/W	display technique	▶ DLP display technology
Color temperature	▶ 6500-8500K	Working voltage	▶ AC110V-240V
Work environment	▶ -40°C-80°C	Service life	▶ 50000H
Waterproof grade	▶ IP40/IP67	Projection distance	▶ 2-30m
Waterproof grade	▶ IP40/IP67	Installation method	▶ Surface mount
Lamp material	▶ High quality aluminum alloy	control mode	▶ Remote switch, push type, USB flash drive

Intelligent video projection effect projection case

Support customized design based on images, free one-on-one design



Holographic/Integrated Interactive Projector

Indoor and outdoor lighting projection lamp series products

A. Adopting the most advanced integrated technology, effectively integrating projectors, signal receivers, servers, control software, and audio. The integration of frequency devices and multimedia software enables plug and play, making the device easy for users to install, use, and maintain. Simplify complexity.

B. Through virtual and reality technology, customers can truly control virtual shadows without the need for other wearable assistive devices. Like a scene, as if experiencing an immersive effect.

C. Infrared radar interactive sensing, detection distance of 3-50 meters, infrared horizontal angle of about 120-160 degrees. Radar sensing angle 180-360 degrees.

D. Holographic interactive scenes can be customized according to the individual needs of users, adding new elements to meet their deeper needs.

E. Multiple splicing and fusion technologies can be used, supporting master-slave mode, single machine mode, and self-test mode.

Product Model List



AT-IT400-F



AT-IT3500-F



AT-IT5500-F

List of Product Parameter Information

Product name	▶ Holographic/Integrated Interactive Projector	Power	▶ 170-1000W
Luminous flux	▶ AC110-240V	Lamp beads	▶ 50-60Hz
Brightness	▶ 3000-6500LM	Resolution	▶ WXGA(1920*1200)
Projected scale	▶ 0.5-3.5:1 optional	Luminous flux	▶ 4000-10000LM
Installation method	▶ Installation of uprights/walls/ceilings	Waterproof grade	▶ IP65/IP40
Host function	▶ Support remote timed power on/off and 7 * 24-hour continuous operation		
Interactive software	▶ 70 types of screen switching and real-time interactive video experience		
Industrial control host	▶ I3, 8th generation CPU, 4GB memory, 60GB hard drive, fanless design, supports remote control switch, self starting upon startup		
Accessory	▶ 1 set of temperature and humidity controller, 4 imported ventilation fans, 1 PTC heater, 4 sets of waterproof filter louvers, outdoor infrared capture camera (optional outdoor radar), professional outdoor waterproof audio 30W		

Real time shooting case of holographic interactive projection effect
Support customized design based on images, free one-on-one design

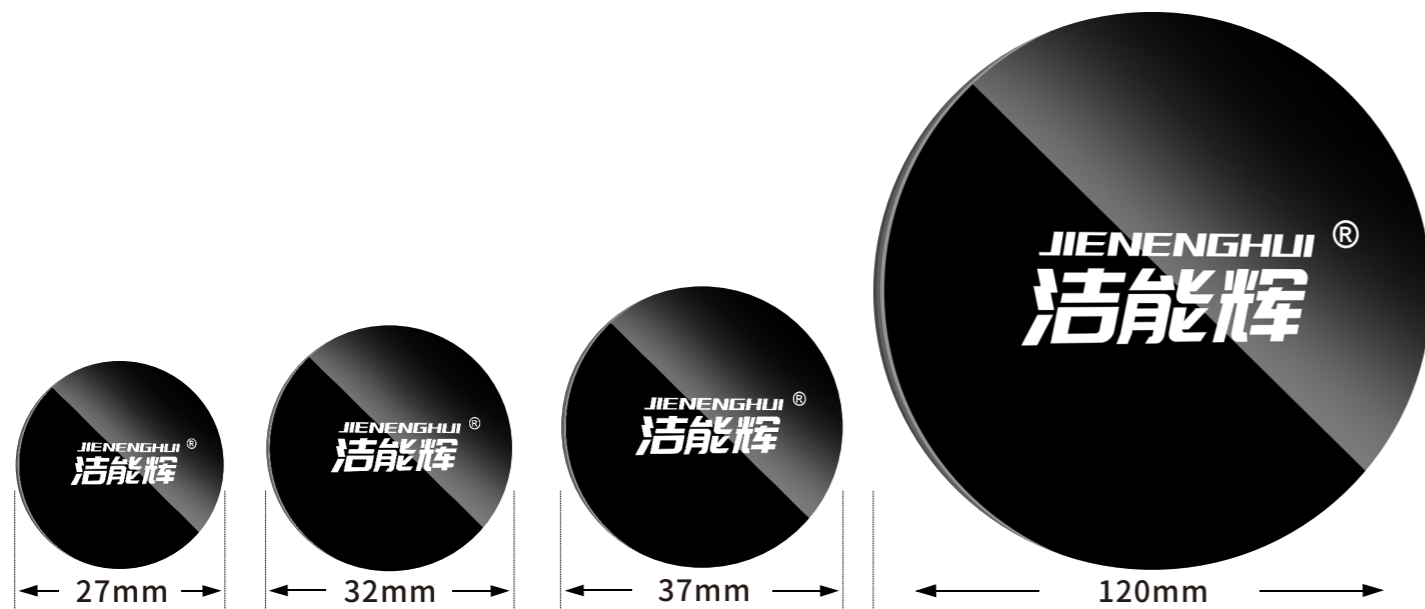


Introduction to GOBO Pattern Sheets

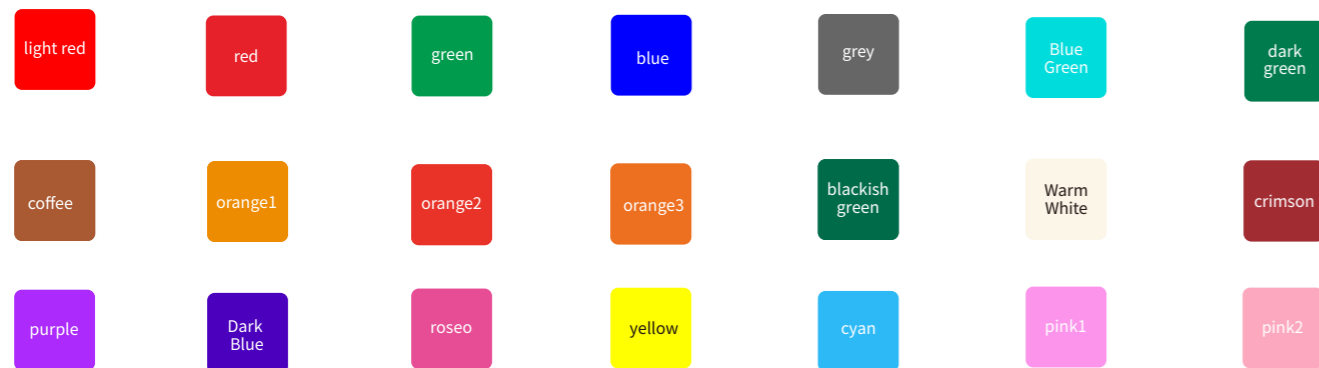
Introduction to Lamp and Lens

Product Introduction

The diameter range of glass pattern sheets produced by Jienenghui ranges from 27.5 to 120 millimeters, which basically includes all projections on the market Lamp size. High temperature resistance and less prone to corrosion. The material is imported colored coated lenses, with micron carving accuracy, refined projection, and colorColorful and clear in design.



Pattern Color Table



* If you purchased the lamp from another company and want to purchase the pattern film from our manufacturer, please note that due to the continuous technological changes of projection lamps in the market, the size of other companies may differ from ours. Therefore You must check the size of your lamp clearly (take apart the lamp and measure it) to avoid the trouble of not being able to use it.

Free one-on-one design patterns

Introduction to Lamp and Lens

<p>Monochromatic pattern</p> <p>+Any one on the color card Lamp chips made of different colors It's a monochromatic lamp</p>	<p>Monochromatic pattern Design renderings</p>	<p>Monochromatic pattern Projection real shot</p>
<p>Two tone pattern</p> <p>+Any two on the color chart Lamp chips made of different colors It's a monochromatic lamp</p>	<p>Two tone pattern Design renderings</p>	<p>Two tone pattern Projection rendering</p>
<p>Tricolor pattern</p> <p>+Any three on the color chart Lamp chips made of different colors It's a monochromatic lamp</p>	<p>Tricolor pattern Design renderings</p>	<p>Tricolor pattern Projection rendering</p>
<p>Full color pattern</p> <p>Can make any color Gradient color, pattern Unlimited</p>	<p>Full color pattern Design renderings</p>	<p>Full color pattern Projection rendering</p>

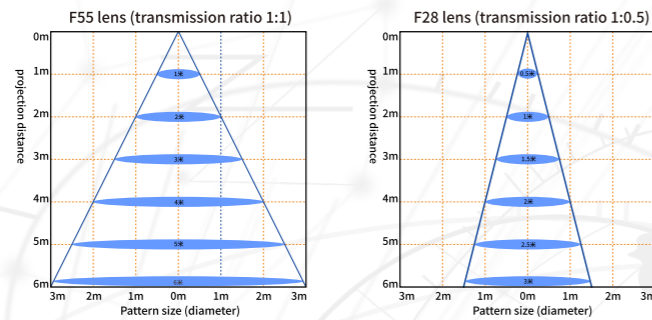
Projection Lamp Lens Introduction

Introduction to various lens imaging sizes

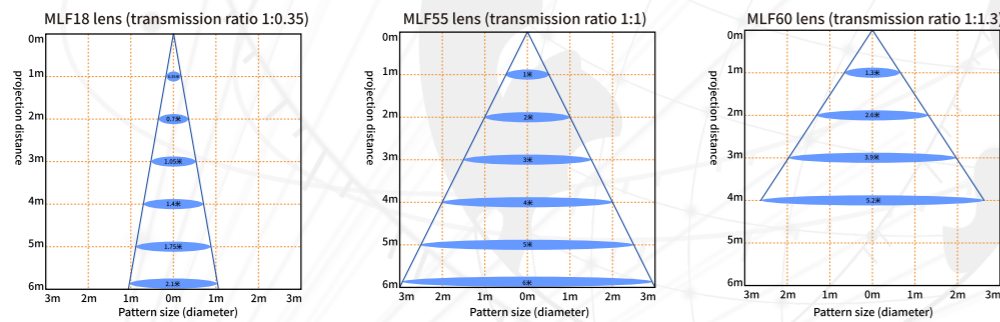
Lens and Projection Angle

Introduction to Lens and Projection Angle

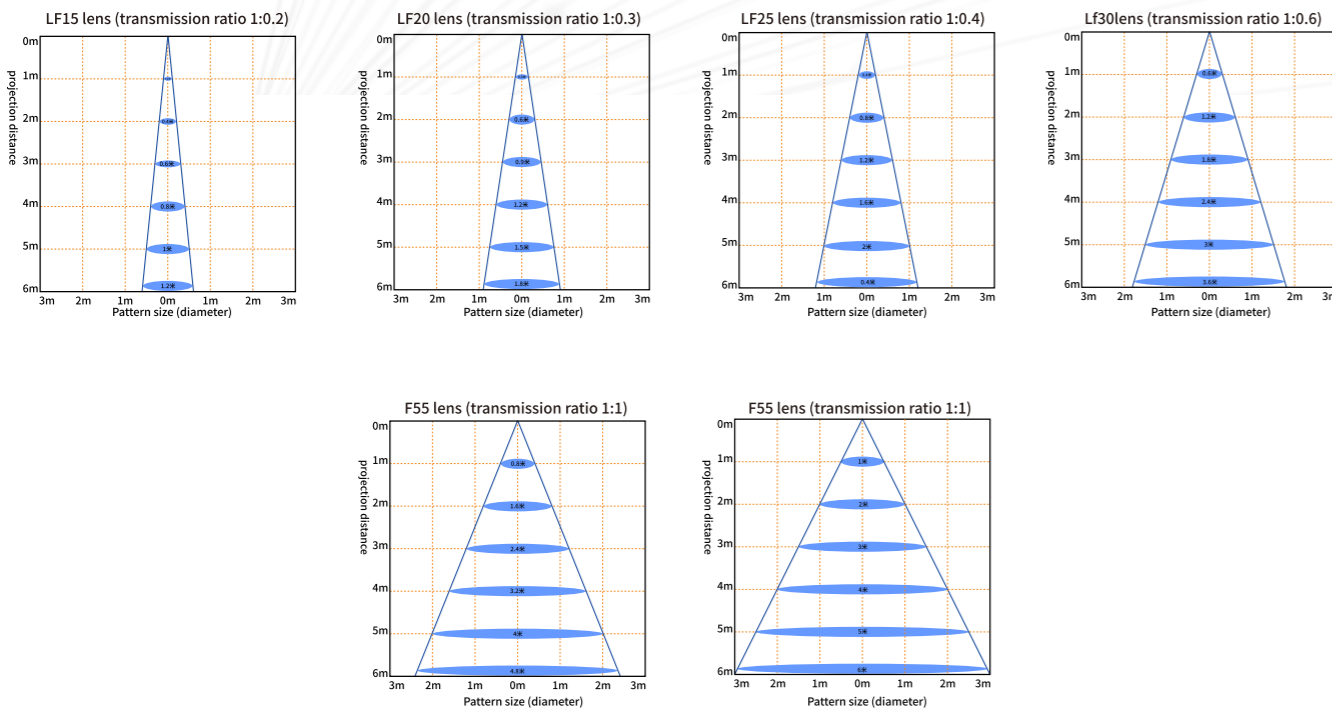
F-series lens



MLF series lens



LF series lens



***This only includes the built-in lens inside the lens and does not include the spotlight lens inside the lamp. Different projection ratio lenses can be selected and used according to needs**

***This only includes the built-in lens inside the lens and does not include the spotlight lens inside the lamp. Different projection ratio lenses can be selected and used according to needs**

>>> Pay attention to the projection angle during installation

1:0.36 Projection Ratio

Projection distance (m)	Pattern size (diameter) (m)
1M	0.36m
2M	0.72m
3M	1.08m
4M	1.44m
5M	1.80m
6M	2.16m
7M	2.52m
8M	2.88m
9M	3.24m

The vertical projection effect is the best (more than 35° will cause significant deformation), you can contact customer service for free correction service.